

WHEN to refer to SOBI...

(Strategies of Behavioral Intervention)

Student Conduct and Title IX
Gonzales Hall 203
SAC-Cares@alamo.edu
210-486-0926

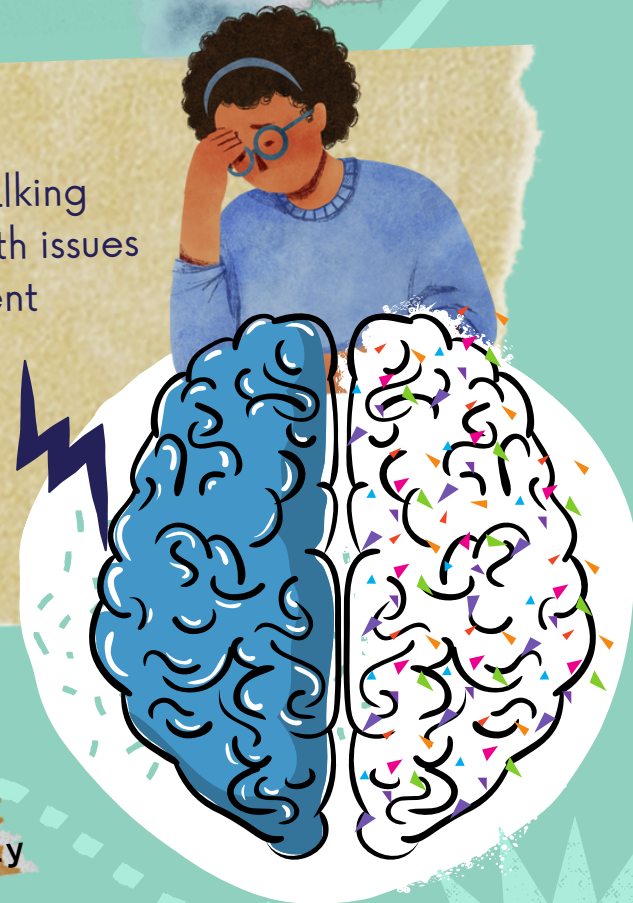
Our SOBI cross-campus team will meet to detect "red flags" in student or group behaviors. The team collaborates, collects info, identifies risks, possible resources needed, intervenes when appropriate, and takes a proactive, non-punitive approach that balances the needs of the student in crisis and the institution.

"Red Flags"

- Decline in self-care
- Withdrawn
- Hopelessness
- Emotional
- Disorganized thoughts or writing
- Irrational thoughts and/or speech
- Decline in grades
- Paranoid thinking or talking
- Vocalized mental health issues
- Suicidal Thoughts/ intent
- Aggressive Behavior
- Explicit Threats

Important things to include when submitting referrals/ reports:

- Direct quotes used
- Identify and note the behavior specifically



To report visit: alamo.edu/sac/saccarees